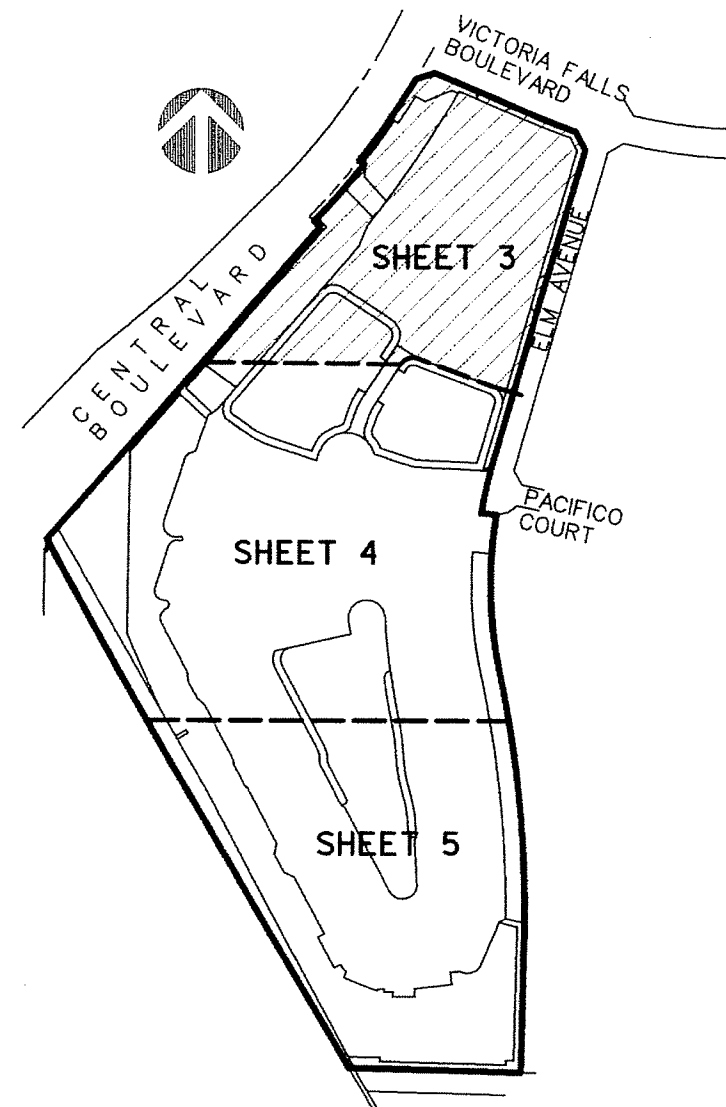
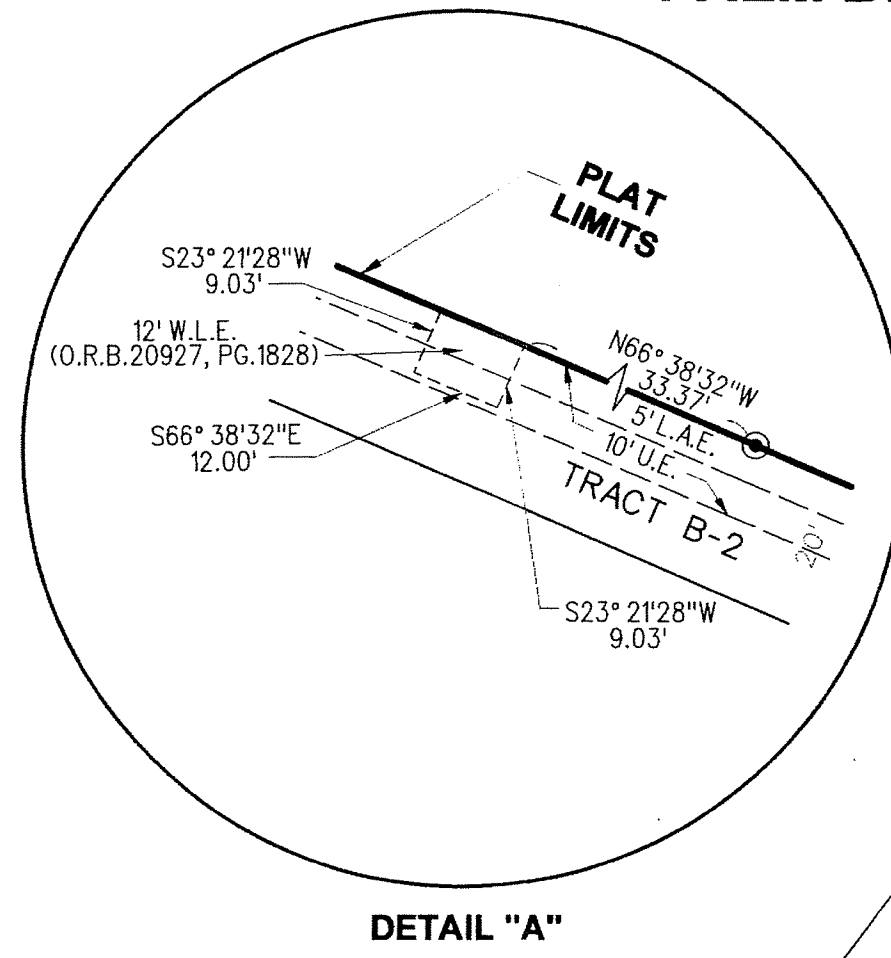


# PERIMETER

**SURVEYING & MAPPING**  
Certificate of Authorization No. LB7264  
Prepared by: Jeff S. Hodapp, P.S.M.  
947 Clint Moore Road  
Boca Raton, Florida 33487  
Tel: (561) 241-9988  
Fax: (561) 241-5182



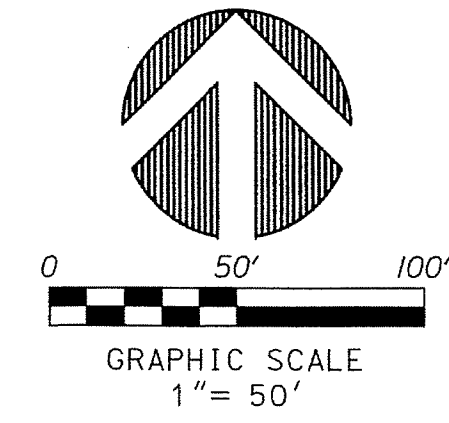
**KEY MAP**  
NOT TO SCALE



**DETAIL "A"**

# CIMARRON COVE RE-PLAT NO. 2

A REPLAT OF A PORTION OF "CIMARRON COVE RE-PLAT NO. 1" (P.B. 116, PGS. 128-132, P.B.C.R.)  
AND A PORTION OF "CIMARRON COVE" (P.B. 111, PGS. 102-106, P.B.C.R.)  
IN SECTIONS 35 AND 36, TOWNSHIP 41 SOUTH, RANGE 42 EAST,  
PALM BEACH GARDENS, PALM BEACH COUNTY, FLORIDA.  
NOVEMBER, 2014



# 74

**SHEET 3 OF 5**

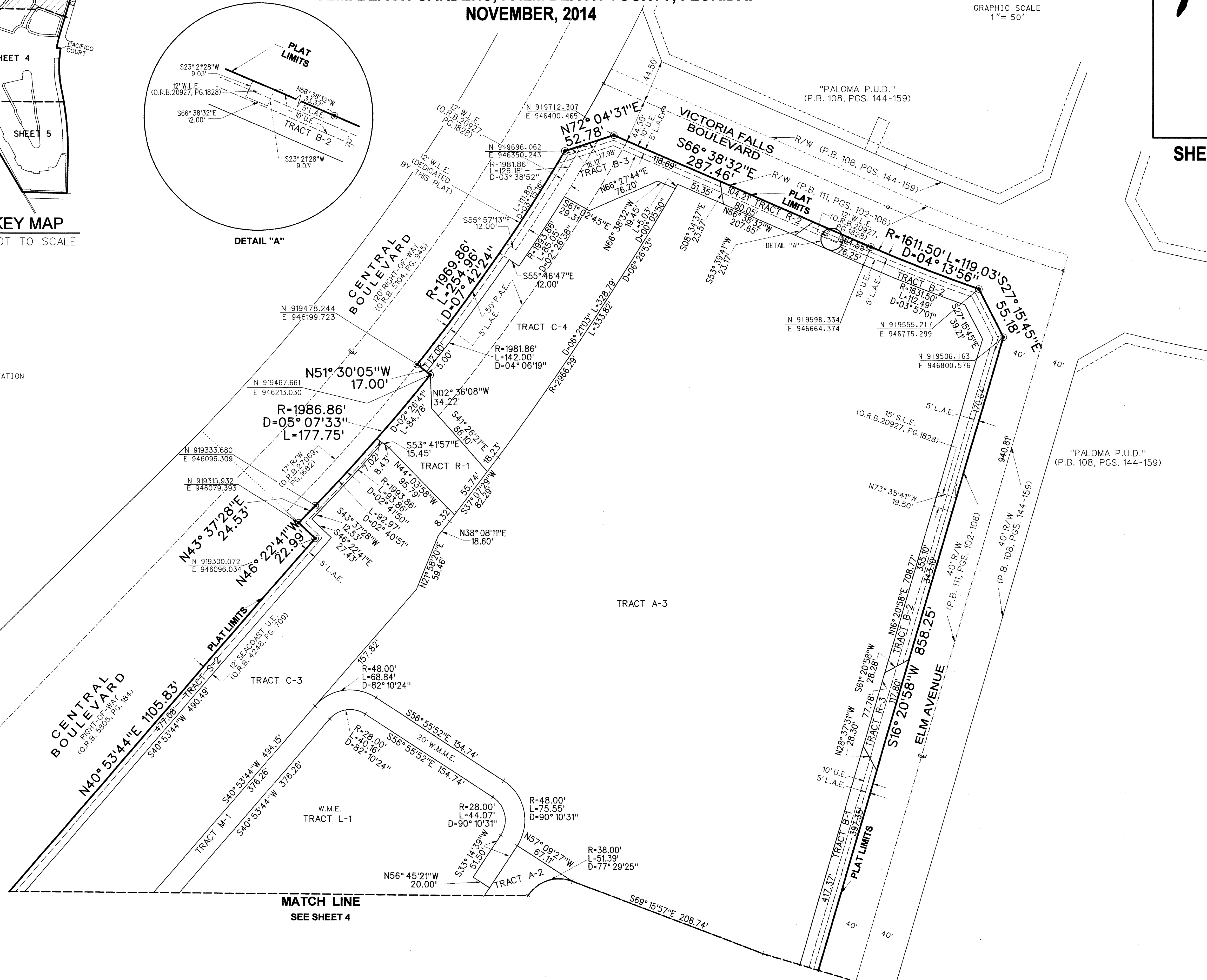
**LEGEND:**

● SET P.R.M. (UNLESS OTHERWISE NOTED) - 4" X 4" CONC. MON. WITH ALUMINUM DISK STAMPED P.R.M. • LB7264

⊖ CENTERLINE

**ABBREVIATIONS:**

- CH - CHORD BEARING
- CHB - CONCRETE
- CONC. - CORNER
- COR. - DELTA (CENTRAL ANGLE)
- D - DRAINAGE EASEMENT
- F.D.O.T. - FLORIDA DEPARTMENT OF TRANSPORTATION
- L - ARCLength
- L.A.E. - LIMITED ACCESS EASEMENT
- L.B. - LICENSED BUSINESS
- L.E. - LANDSCAPE EASEMENT
- L.S. - LICENSED SURVEYOR
- L.S.E. - LIFT STATION EASEMENT
- MON. - MONUMENT
- O.R.B. - OFFICIAL RECORDS BOOK
- N.P.B.C.I.D. - NORTHERN PALM BEACH COUNTY IMPROVEMENT DISTRICT
- N.R. - NON-RADIAL
- P.A.E. - PEDESTRIAN ACCESS EASEMENT
- P.B. - PLAT BOOK
- P.B.C.R. - PALM BEACH COUNTY RECORDS
- PG. - PAGE
- P.C.P. - PERMANENT CONTROL POINT
- P.R.M. - PERMANENT REFERENCE MONUMENT
- P.S.M. - PROFESSIONAL SURVEYOR & MAPPER
- P.U.D. - PLANNED UNIT DEVELOPMENT
- R - RADIIUS
- R.E.E. - ROOF ENCROACHMENT EASEMENT
- R/W - RIGHT-OF-WAY
- S.E. - SIDEWALK EASEMENT
- SEC. - SECTION
- S.F. - SQUARE FEET
- SLE - SEWER LINE EASEMENT
- U.E. - UTILITY EASEMENT
- W.L.E. - WATER LINE EASEMENT
- W.M.E. - WATER MANAGEMENT EASEMENT
- WMME - WATER MANAGEMENT MAINTENANCE EASEMENT
- WMAE - WATER MANAGEMENT ACCESS EASEMENT



**MATCH LINE**  
SEE SHEET 4